

EWU C-Turnier
13. Inselcup Rügen
24.08.2024



Appaloosazucht- und Reitbetrieb
Stadthof 2
18528 Bergen auf Rügen

Wir danken unseren Sponsoren

Schönheitspflege Rahn

Eisenwaren Lebahn

Zinkers Immobilienservice

Western Enterprise

Pferdesportbedarf Rügen Kati Krause

Mönchguter Malerbetrieb Immisch

Ina Gonsiorek

Hofmanufaktur auf Rügen

P-Ranch Alt Reddevitz

Catering Gut Heideck

**EWU C-Turnier
Bergen auf Rügen
24. August 2024**

Veranstalter:	Angelika Immisch
Turnierleitung:	Angelika Immisch
Richter:	Regina Jentsch
Ringsteward:	Josephine Pisch
EWU-Steward:	Wiebke Lohmann
Helferteam:	Hofteam
Meldestelle:	Evelyn Martens
Sound & Ansage:	Stefan Janssen
Sanitätsdienst:	112
Hufschmied (auf Abruf):	Michael Millermann 0172 3830300
Tierarzt (auf Abruf):	Dr. Gerke Puvogel 0174 2949342

Patternliste

Showmanship:

LK 1-3	Extra
LK 4/5	Extra

Western Horsemanship:

LK 1/2 A	Extra
LK 3	Extra
LK 4/5	Extra

Greenhorse:

Basis	Pt. 5
Trail	Pt. 5

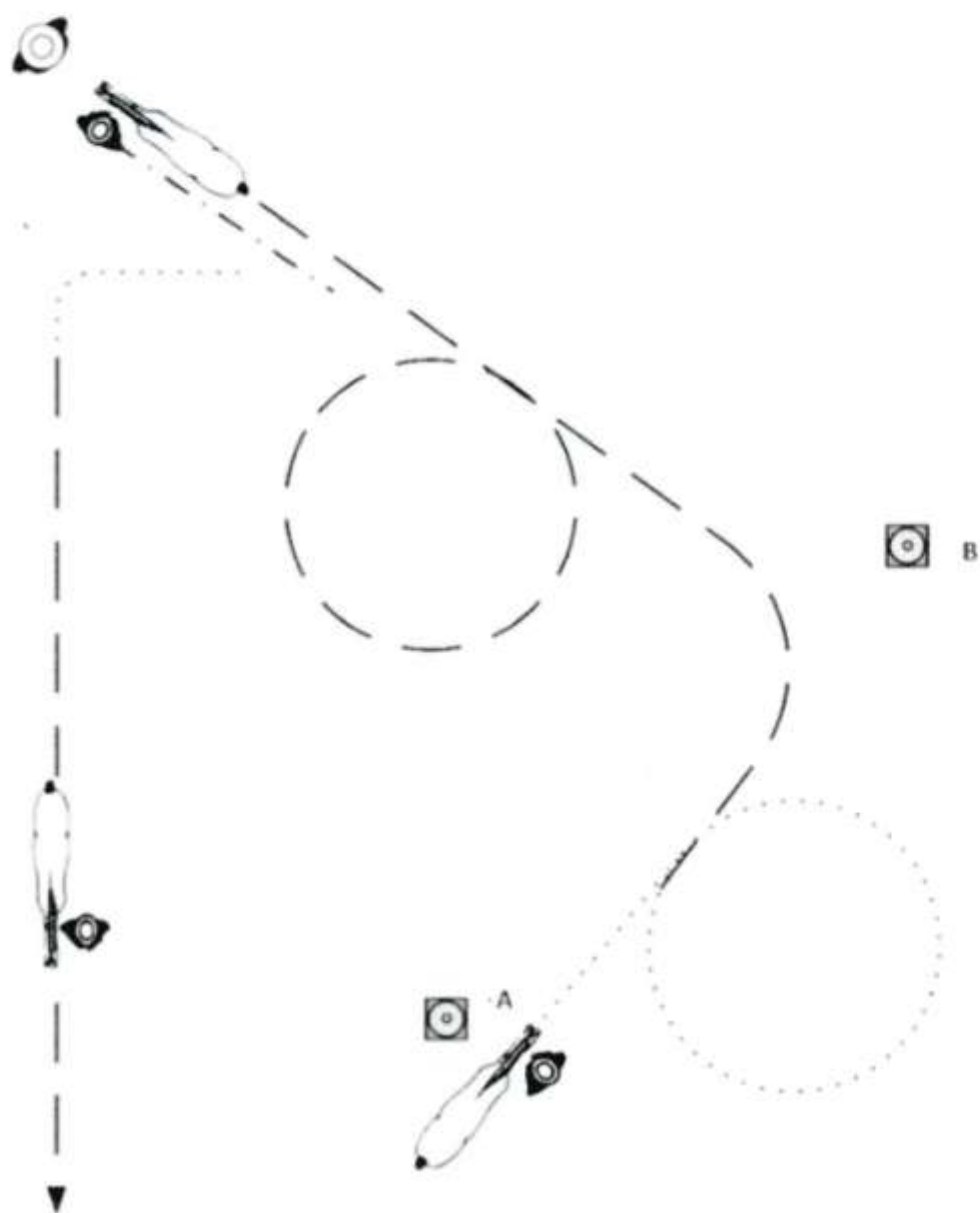
Trail:

LK 1/2 A, LK 3	Set 12, Pt. 6
LK 4/5	Set 12, Pt. 7
Horse & Dog	Set 12, Pt. 10

Ranch Riding:

LK 1/2 A, LK 3	Pt. 18
LK 4/5	Pt. 30

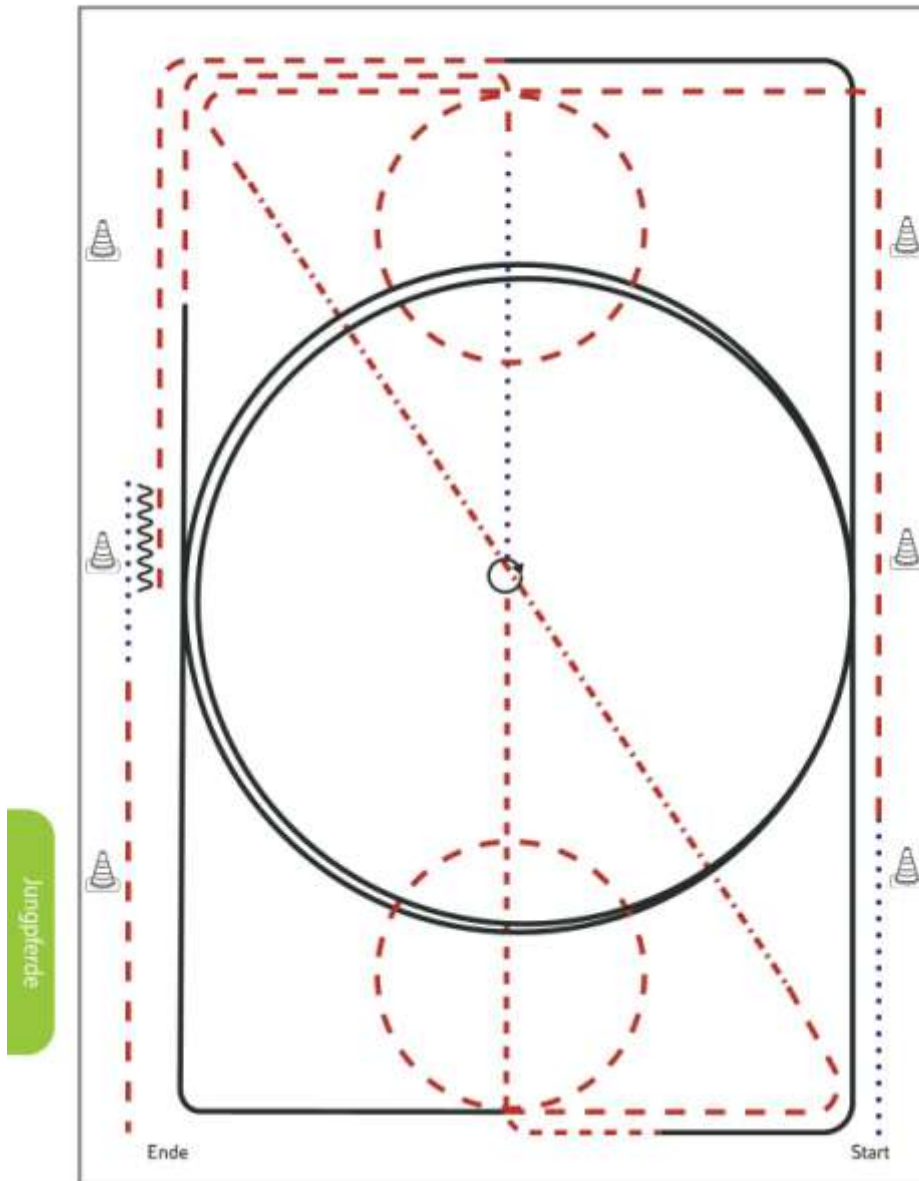
SHOWMANSHIP AT HALTER – LK 4/5 *Sa*



1. Bereithalten bei A, in walk richtung B, Zirkel nach rechts
2. Übergang in Jog, Abbiegen richtung Richter
3. Jog Zirkel links, Jog gerade Linie zu Richter, Stop
4. Setup
5. Inspection
6. Backup eine Pferdelänge
7. Erst Walk, dann Jog zu warm-up area

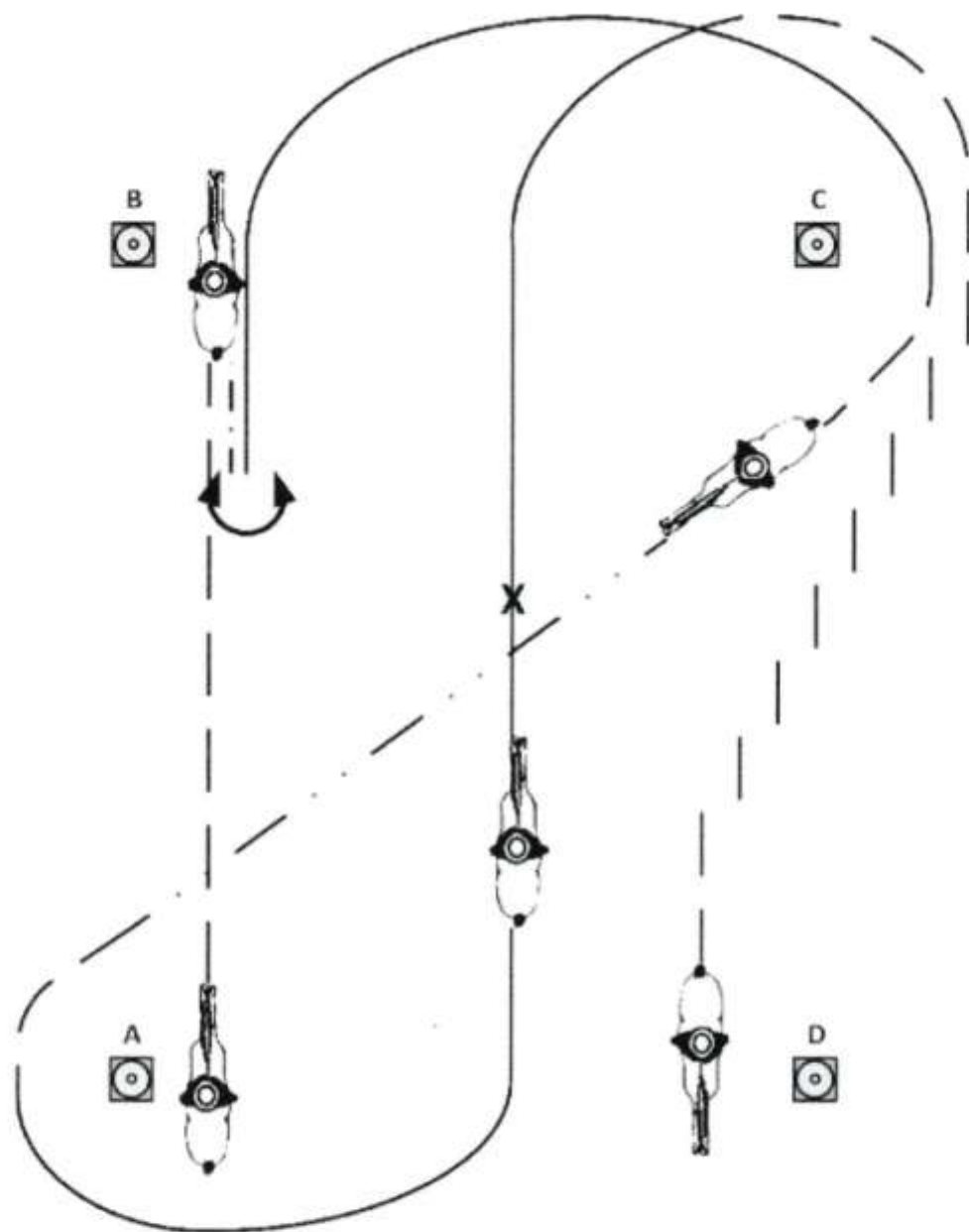
.....	Walk
————	Jog
- - - -	Ext Jog
—————	Lope
- · - · -	Backup
⋈ ↑ ⋈	Sidepass

Jungpferde Basis Pattern 5 (4j.)



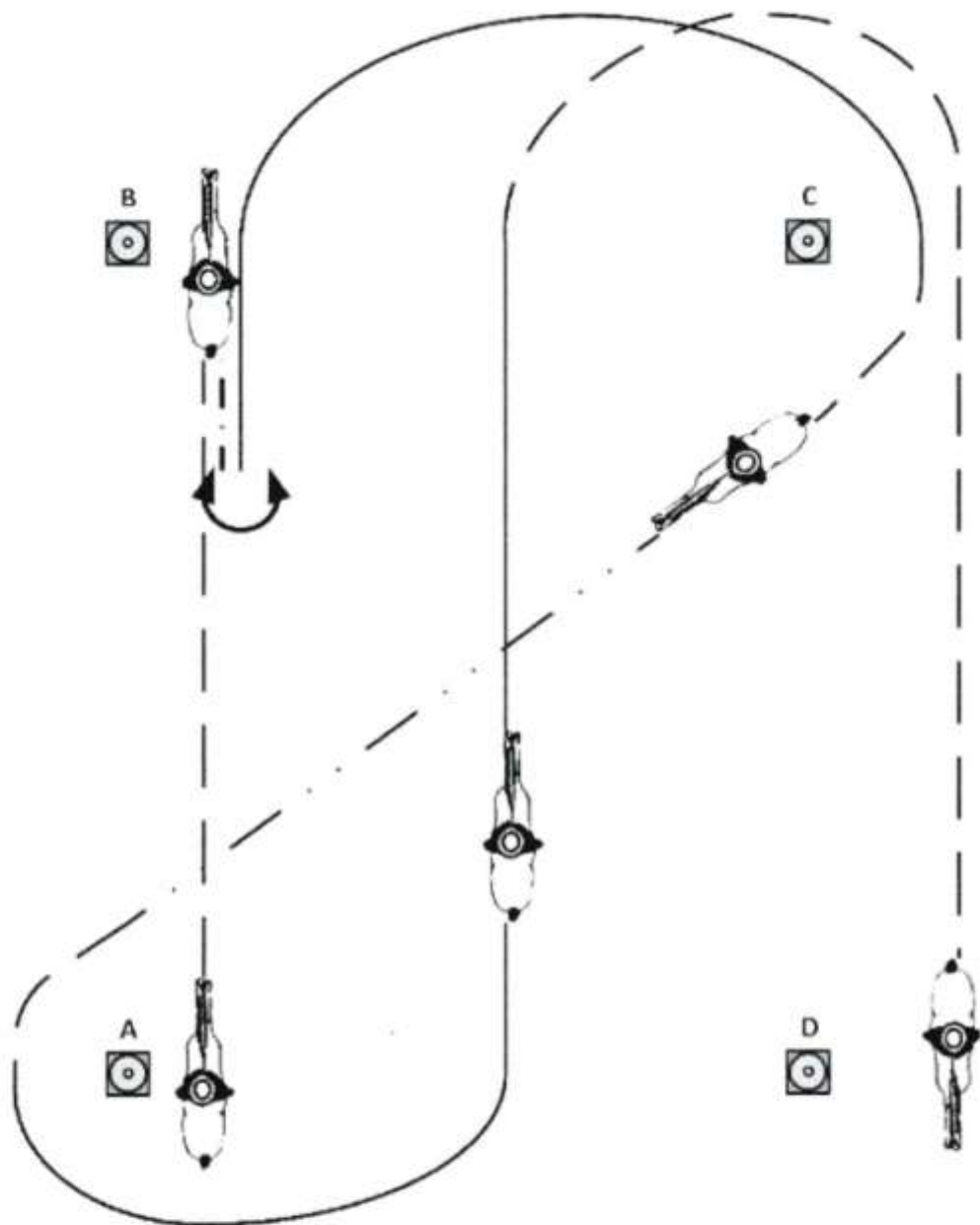
- 1) Schritt, Trab, Volte (links), ganze Bahn
- 2) Tritte verlängern auf der Diagonalen
- 3) Trab, Volte (rechts)
- 4) Rechtsgalopp ganze Bahn, Mittelzirkel, ganze Bahn
- 5) Trab, Schritt bis X, bei X Stopp
- 6) HHW 360° (rechts oder links)
- 7) Trab, Linksgalopp ganze Bahn, Mittelzirkel, ganze Bahn
- 8) Trab, Stopp
- 9) Rückwärtsrichten (mind. 2 Pferdelängen), Schritt, im Trab die Arena verlassen

Legende:	
Schritt
Trab	-----
Galopp	————
Wechselzone	=====
Rückwärts	~~~~~



1. Jog from A to B
2. Stop, backup one horselength, turn 360° either way
3. Lope right lead around C
4. Extended Jog to A
5. Lope left lead around A, flying or simple leadchange at X, lope right lead
6. Jog, leg yield, stop at D

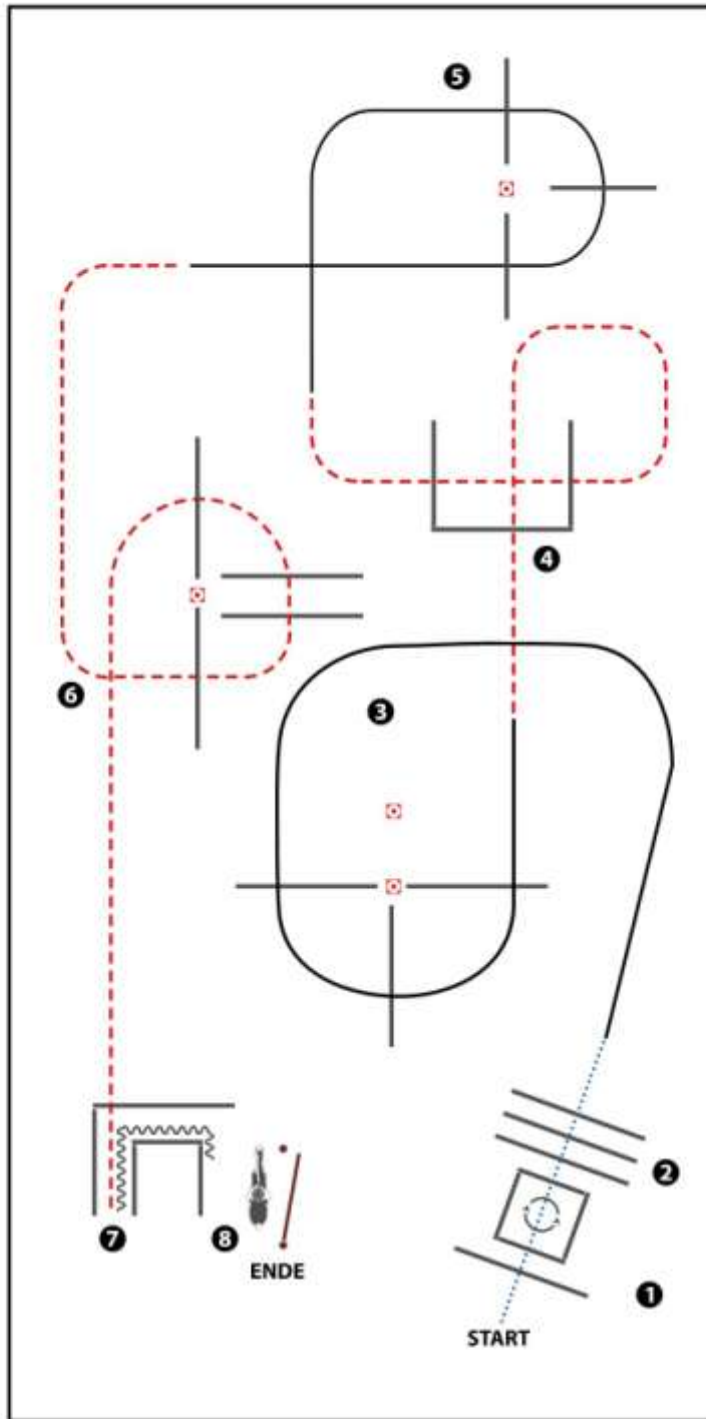
- Walk
- — — Jog
- . - . - . Extended Jog
- Lope
- - - - Backup
- ↻ ↑ ↻ Sidepass



1. Jog from A to B
2. Stop, backup one horselength, turn 360° either way
3. Lope right lead around C
4. Extended Jog to A
5. Lope left lead around A
6. Jog, stop at D

- Walk
- — — Jog
- · - · - Extended Jog
- Lope
- - - Backup
- ↻ ↑ ↻ Sidepass

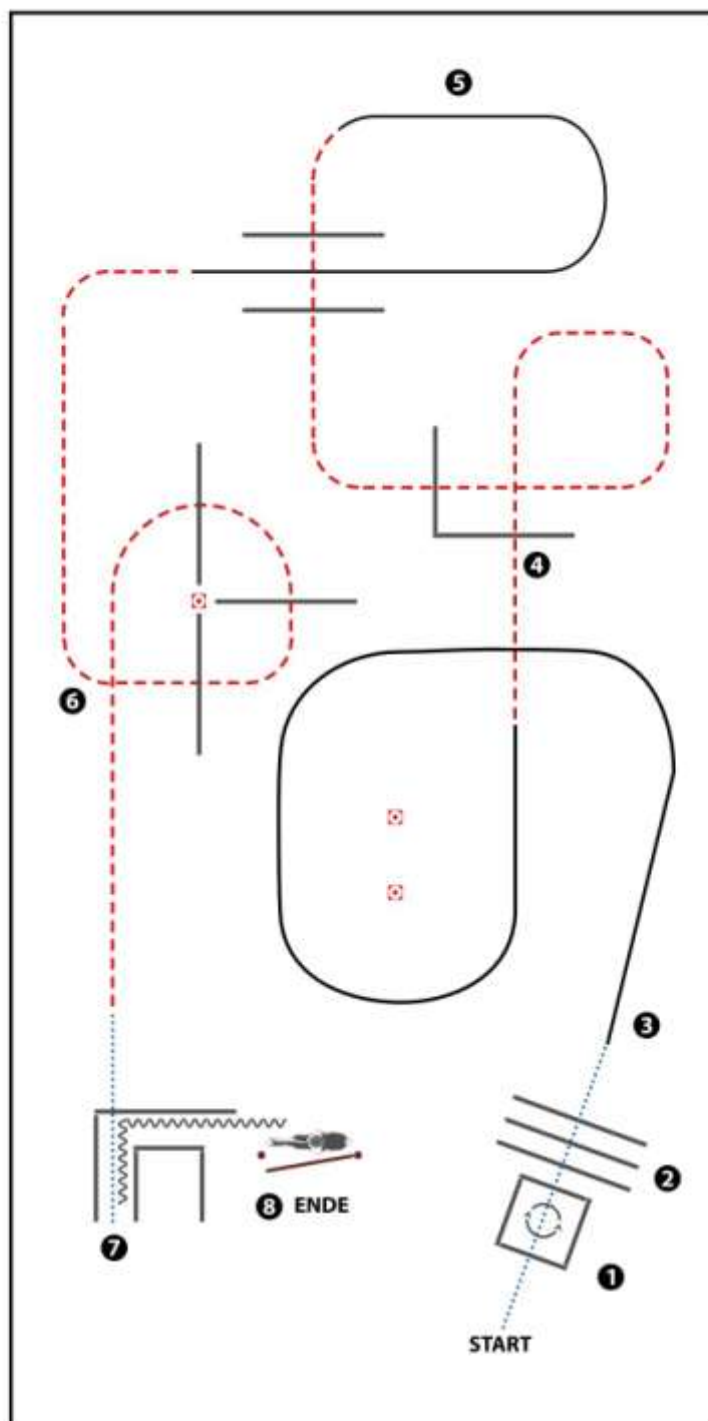
LK 1-3



(Erhöhungen optional)

- 1) WALK OVER, INTO BOX,
TURN 360° EITHER WAY (LEFT OR RIGHT)
- 2) WALK OUT, WALK OVER
- 3) LOPE OVER (LL)
- 4) JOG OVER
- 5) LOPE OVER (RL)
- 6) JOG OVER
- 7) JOG IN, BACK UP
- 8) GATE RIGHT HAND

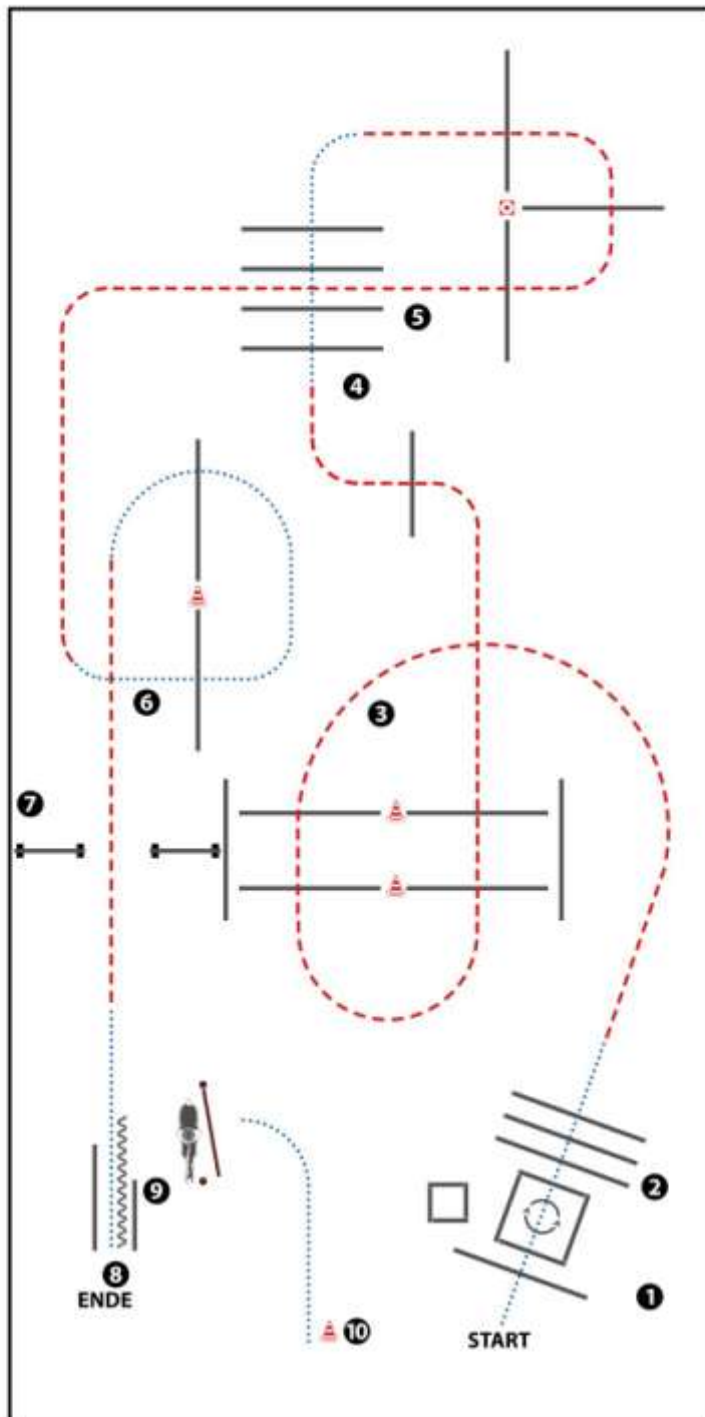
WALK (SCHRITT)
EXTENDED WALK
JOG/TROT (TRAB)	-----
EXTENDED TROT	-----
LOPE (GALOPP)	=====
EXTENDED LOPE	=====
BACK UP (RÜCKWÄRTS)	~~~~~
LEAD CHANGE (GALOPPWECHSEL)	=====
TURN (DREHUNG)	⊙
	<small> GRENZ WÄRT/RECHTES WÄRTS LINKS </small>



- 1) WALK INTO BOX,
TURN 360° EITHER WAY (LEFT OR RIGHT)
- 2) WALK OUT, WALK OVER
- 3) LOPE (LL)
- 4) JOG OVER
- 5) LOPE (RL)
- 6) JOG OVER
- 7) WALK IN, BACK UP
- 8) GATE (LEFT HAND)

WALK (SCHRITT)
EXTENDED WALK
JOG/TROT (TRAB)
EXTENDED TROT
LOPE (GALOPP)
EXTENDED LOPE
BACK UP (RÜCKWÄRTS)
LEAD CHANGE (GALOPPWECHSEL)
TURN (DREHUNG)

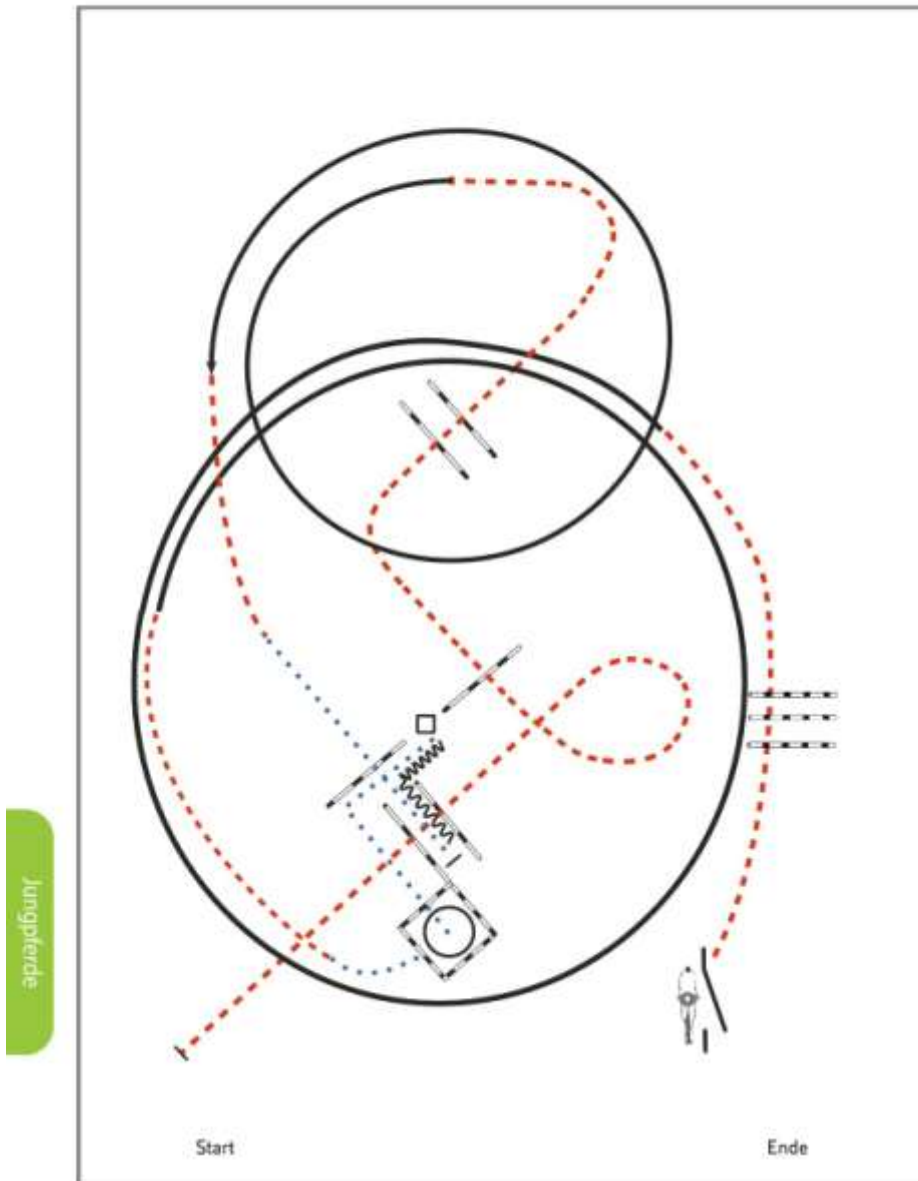
LK 1-3
H&D TH



- HUND ABLEINEN**
- 1) HUND IN BOX ABLEGEN, WALK INTO BOX, TURN 360° EITHER WAY (LEFT OR RIGHT)
 - 2) HUND IN BOX WALK OUT, WALK OVER
 - 3) HUND BEI FUSS JOG OVER
 - 4) HUND BEI FUSS WALK OVER
 - 5) HUND BEI FUSS, HUND DURCH GASSE (RIGHT OR LEFT), JOG
 - 6) HUND BEI FUSS WALK OVER
 - 7) HUND SPRUNG, JOG
 - 8) HUND ABLEGEN, WALK IN, BACK UP
 - 9) GATE (LEFT HAND)
 - 10) HUND ABRUFEN, WALK, ANLEINEN

WALK (SCHRITT)
EXTENDED WALK	-----
JOG/TROT (TRAB)	-----
EXTENDED TROT	-----
LOPE (GALOPP)	=====
EXTENDED LOPE	=====
BACK UP (RÜCKWÄRTS)	~~~~~
LEAD CHANGE (GALOPPWECHSEL)	=====
TURN (DREHUNG)	○

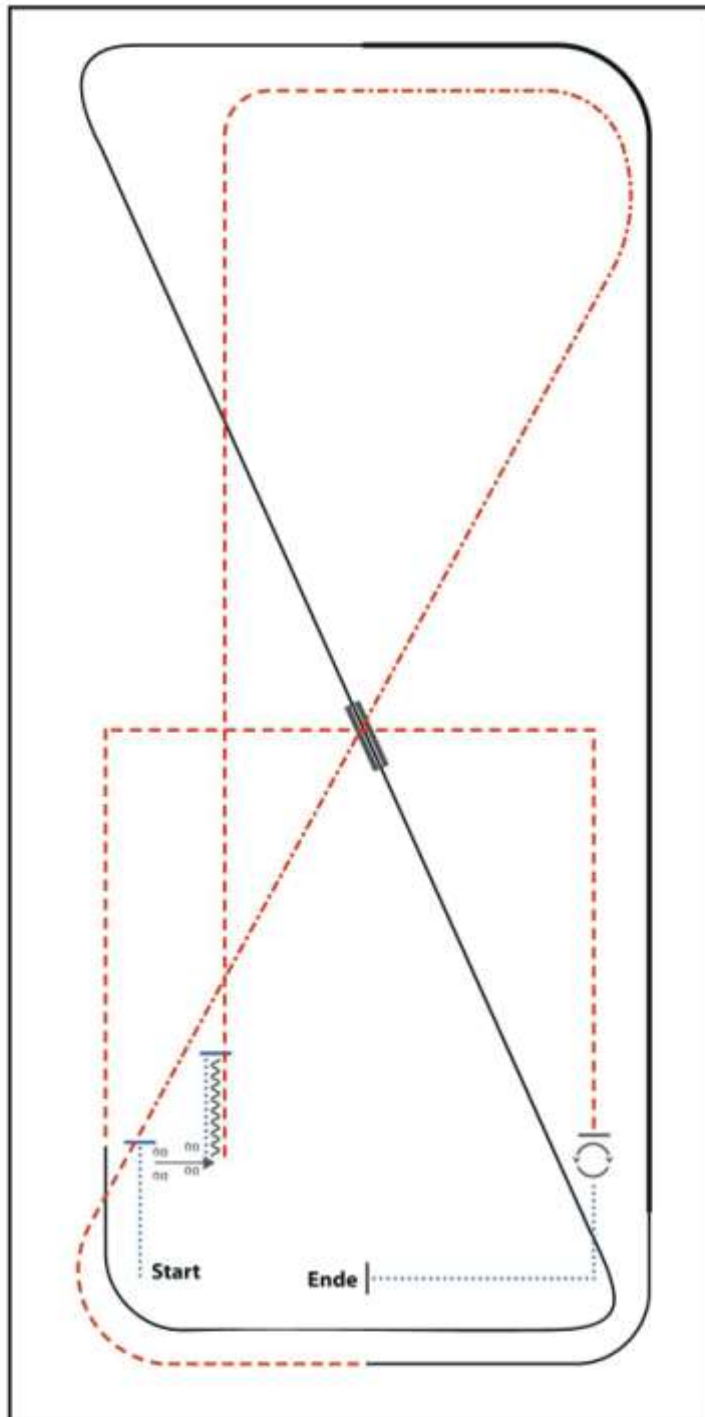
Jungpferde Trail Pattern 5 (4j.)



Jungpferde

- 1) Trabstangen (2 Stangen)
- 2) Trabstangen (3 Stangen)
- 3) Linksgalopp, Trab
- 4) Schritt, Schrittstangen
- 5) Rückwärts-L
- 6) Schritt in Box (2m), 450° rechts, Schritt
- 7) Trab, Rechtsgalopp
- 8) Trab, Trabstangen
- 9) Seiltor (linke Hand)

Legende:	
Schritt
Trab	— — — —
Galopp	— — — —
Wechselzone	=====
Rückwärts	~~~~~



LK 1/2 A
LK 3

- 1) WALK, STOP
- 2) SIDEPASS RIGHT
- 3) WALK, STOP, BACK UP
- 4) TROT
- 5) EXTENDED TROT, TROT
- 6) LOPE (LL)
- 7) EXTENDED LOPE (LL), LOPE (LL)
- 8) CHANGE LEADS (SIMPLE OR FLYING)
- 9) LOPE (RL)
- 10) TROT CORNERS
- 11) STOP, 360° TURN (LEFT OR RIGHT)
- 12) WALK, STOP

WALK (SCHRITT)
EXTENDED WALK
JOG/TROT (TRAB)
EXTENDED TROT
LOPE (GALOPP)
EXTENDED LOPE
BACK UP (RÜCKWÄRTS)
LEAD CHANGE (GALOPPWECHSEL)
TURN (DREHUNG)

